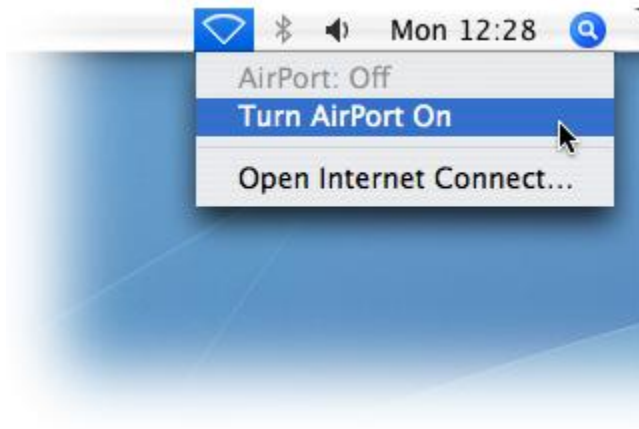


## How do I connect to the internet in the dorms? Mac/Wireless

1. Make sure you DO NOT have an Ethernet cable plugged in at the same time.
2. On the upper right corner of your computer screen, make sure your AirPort is turned on.
  - Click the icon (Shown Below) and select “Turn AirPort On”.



Icon for wireless turned on



Icon for wireless turned off

3. Open an internet browser (Firefox Recommended). Go to [www.fitnyc.edu](http://www.fitnyc.edu)
4. You will be directed to the login page below. Fill in the fields using your Username—your firstname\_lastname and your current password.

### Login to FIT Wireless Network

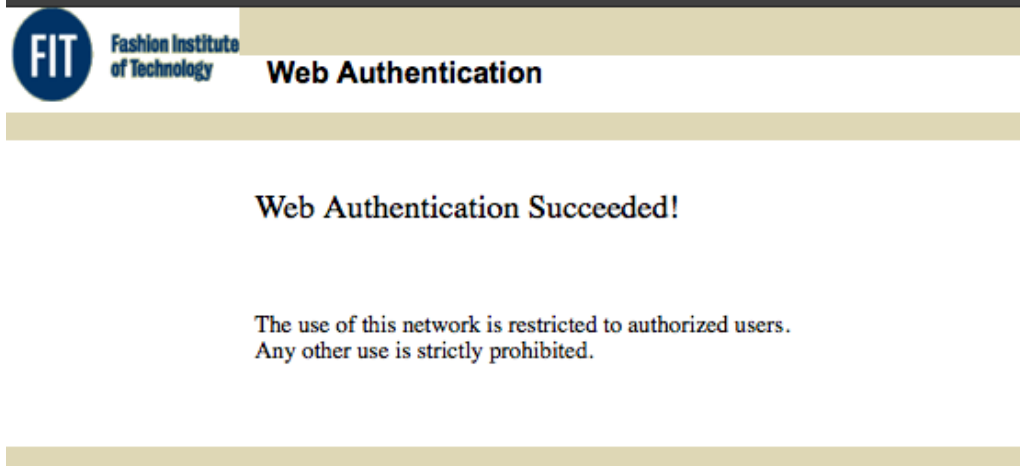


Fashion Institute  
of Technology

User ID

Password


5. If you entered your username and password correctly you will be directed to the page below.



6. You will automatically be directed to the page below. Click on start.



7. Fill in all the fields and make sure “Policy Acceptance” is checked. Click “Accept/Run”.

Network Access Control  
Powered by Bradford Networks

REGISTRATION

DOWNLOAD

RESULT

**WELCOME**

Please read the FIT terms and conditions below and enter your FIT Network username and password below to begin the final registration process. If you cannot remember your username/password, click on the Change Password link to the right. Windows 95 may not register properly, please call the IT Support get registered.

**IT For FIT**

**Wireless Policy and Rational**

**DOWNLOAD**

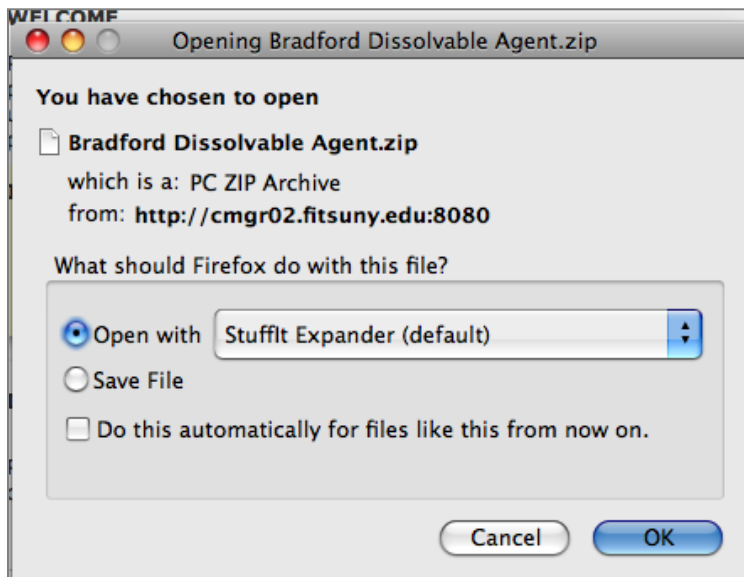
Please enter your user name, password, and select your device type. Then click the button to download / run the Client Security Agent(CSA) on your machine.

[>> Instruction](#)

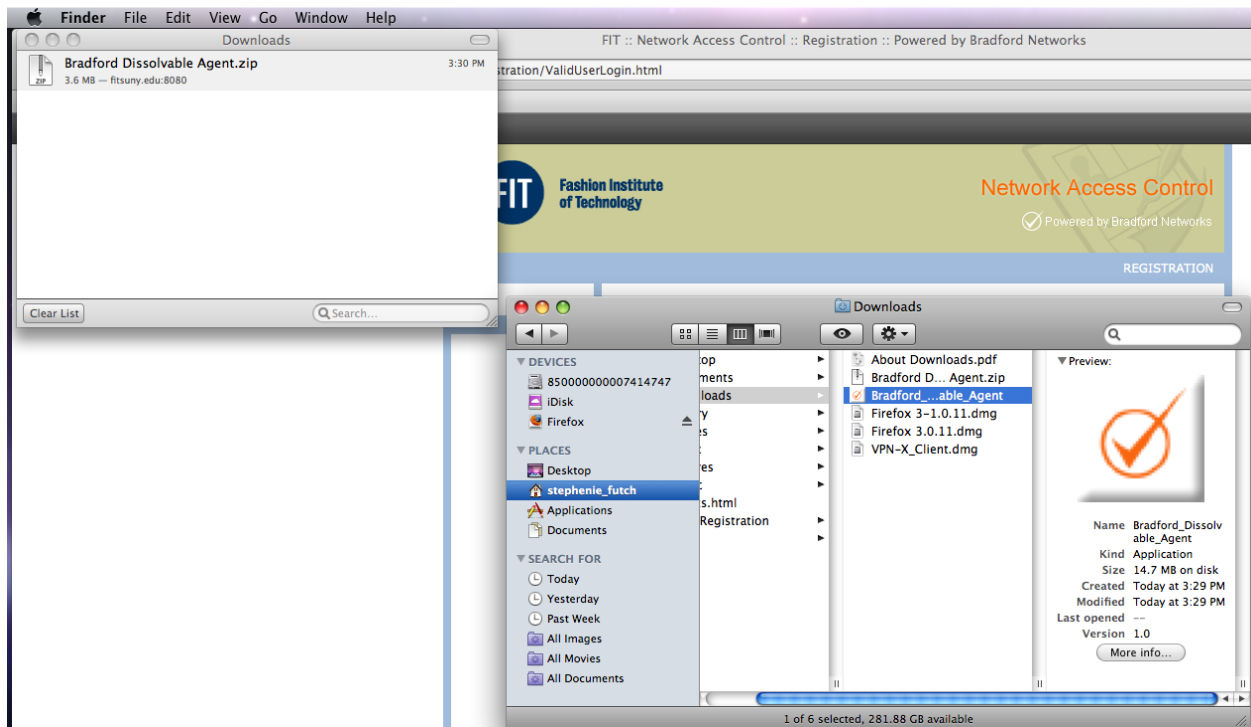
User Name	<input type="text" value="John_Smith"/>
Password	<input type="password" value="*****"/>
Contact Phone #	<input type="text" value="555-555-5555"/>
User Type	<input type="text" value="Student"/>
Policy Acceptance	<input checked="" type="checkbox"/>
<input type="button" value="Accept / Run"/>	

For assistance call FIT Customer Service: (212) 217-4357

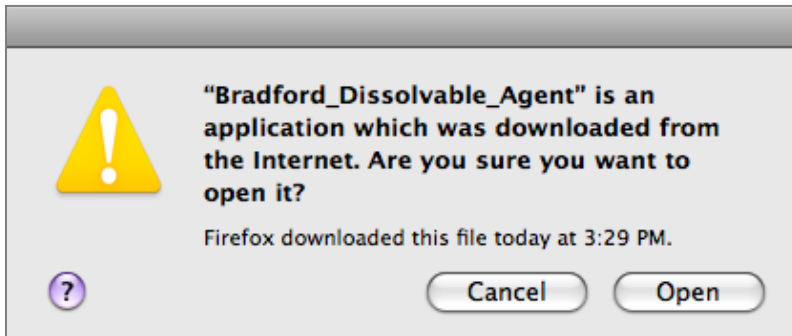
- The box below will appear. Click “Open with StuffIt Expander” and click “OK”.



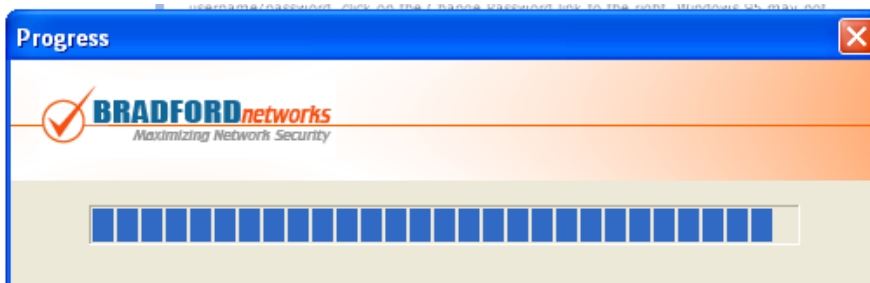
- Double click on the “Bradford Dissolvable Agent.zip” in the Downloads window.



10. The dialog box below may appear. Click “Open”.



11. You will see the Bradford Networks box below.



12. If your computer meets the minimum requirements you will get the page below



13. Close the Internet browser and wait one minute, before trying to access a webpage.